

Copper, Flex, Slotted, Long Barrel, Inspection Window

TYPE YAZV-2TC-FXSL HYLUG™

Uninsulated Copper Compression Terminal UL Listed 90° C, Up to 35 kV ♦

Compression slotted lugs connect copper or tinned copper conductors to bus bars, CPI racks, cabinets or cable runway. Slotted and 90° slotted lugs have one round and one oblong hole to match hole spacing on equipment mounting rails on CPI racks and cabinets and on some bus bars.



Features & Benefits

- Inspection window allows for visual verification that the wire has been fully inserted prior to crimping the lug; not recommended in highly corrosive environments as the wire in the barrel would be exposed
- Barrel is designed with an internal chamfer at the wire entry to ensure smooth insertion of the wire, preventing possible damaging of the wire strands during installation
- Long barrel allows for an increased number of crimps which will increase the mechanical strengths of the connection
- One hole with slotted second hole tongue/tang offers additional flexibility over a standard 2-hole tongue/tang as the slot provides the installer with multiple mounting hole alignments options. The 2-hole feature minimizes the terminations from loosening or rotating under vibration, movement or heat cycling
- 45° and 90° angular lugs are available; please contact Customer Service
- Electro-tin plated unless specified to reduce galvanic corrosion (bimetallic) and resist corrosive elements
- Connectors are clearly marked with stamping and barrel color coding
- BURNDY certifies its products using the BURNDY Engineered System and select other crimp tool manufacturers in accordance with one or more of the UL categories in order to obtain a UL Listing

Accessories

- Hardware - Section F
- PENETROX™ Oxide Inhibitor - Section F
- Heat and Cold Shrink Tubing - Section D
- WIREMIKE™ Wire Micrometer - Section F
- Wire Management (Cable Ties) - Section G

Notes:

All dimensions shown are for reference only.
Field bending straight lugs to achieve an angular connection will void UL Listing / CSA Certifications. BURNDY will not be liable for the connection.

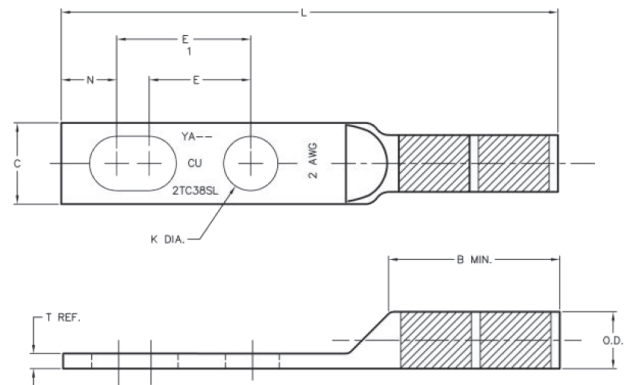


Fig. 1

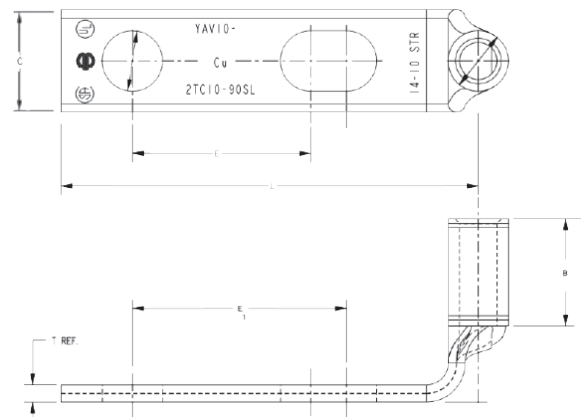


Fig. 2